

MINUTES

KATHERINE SHOWGROUNDS PRECINCT ADVISORY COMMITTEE MEETING

Thursday 12 February 2015 at 5.30pm

1. WELCOME by Chairperson Alderman Rob Phillips

In attendance:

Jai Hunt (KMAC), Lee Hunt (KMAC), Natalie Waterton (Katherine Turf Club), Anna Kerwin (KDSS and ASSNTB), Eamon Rice (AFLNT), Nick Lovering (Katherine Umpires Association), Natasha Paul (KR&BHC), Tash MacQueen (KR&BHC), Sarah Hoare (KR&BHC), Courtney Golding (KDSS), Vicki Williams (NTA&WPC), David Moore (KTC Operations Manager), Cheriece Fry (KTC Works Administration Officer)

2. APOLOGIES

Terry Avenell (KDSS)

3. CONFIRMATION OF PREVIOUS MINUTES - 16 December 2014

Moved: Lee Hunt

Seconded: Anna Kerwin

4. BUSINESS ARISING FROM PREVIOUS MINUTES - 16 December 2014

- 4.1 Toilet Block: David Moore advised that more stakeholders were required to join the Turf Club with monetary contributions before the project could progress any further.

David gave an overview of previous discussions to the new attendees.

Alderman Phillips proposed a separate meeting be held for those stakeholders who wished to have further discussions - WAO to send out a meeting request for Thursday 19 February at 4.30pm.

Lee Hunt advised the Katherine Model Aero Club; as a not for profit organisation; would be willing to contribute \$500.00.

5. GENERAL BUSINESS

- 5.1 KDSS Proposal to relocate the Campdraft and Rodeo Arena:

Motion to include the movement of the Rodeo and Campdraft arena on the strategic plan for the Katherine Showgrounds.

To have the proposal approved and moved to Katherine Town Council for consideration and inclusion in the KTC strategic plan to allow phase 1 ground development to begin.

Moved: Courtney Golding

Seconded: Lee Hunt

Carried: 11/0

Attachment: KDSS Proposal - Relocation of Campdraft and Rodeo Arena

6. OTHER BUSINESS

6.1 Australian Football League NT (AFLNT)

Eamon Rice requested an overhanging branch/tree near the oval be pruned - David Moore to add to works schedule.

Eamon also queried the guidelines regarding the length the grass on the oval should be cut; former AFLNT rep was to check this and advise KTC - Eamon to follow up and advise.

6.2 Katherine Rope & Barrel Horse Club (KR&BHC)

Sarah asked if it was possible to get the arena ploughed before this Saturday's event; hard to get water on it; safety issue - David Moore advised that a new water controller will be hooked up in the near future.

6.3 Katherine District Show Society (KDSS)

Expressed concerns regarding the opening/locking of gates by the caretaker as the general public are contacting KDSS when the caretaker is unavailable - David Moore suggested upgrading contact details on the signage.

KDSS raised the number of vehicles being stored at the caretakers residence and whose responsibility is it to ensure bins are emptied - David Moore to investigate and advise.

6.4 New User Group

David Moore advised that the Katherine Scout Group is in discussions with KTC regarding the hiring of the McDouall Stuart Hall and hopes that representatives of the group will be in attendance at the next meeting.

7. DATE OF NEXT MEETING

5.30pm, Thursday 16 April 2015.

8. MEETING CLOSED

6.40PM

Katherine & District
-SHOW SOCIETY-



Katherine Show Grounds Strategic Development

Relocation of Campdraft and Rodeo Arena

Audience: Show Grounds User Group

Date: 12th February 2015

Purpose: Motion to include the movement of the Rodeo & Campdraft arena on the strategic plan for the Katherine Show grounds. To have the proposal approved and moved to Katherine Town Council for consideration and inclusion in KTC strategic plan to allow phase 1 ground development to begin.

OVERVIEW OF KATHERINE SHOW

The Katherine and District Show Society held the first Katherine show in 1965, and was incorporated in 1977. It was created to promote and encourage the development of agricultural, cultural, industrial and commercial activities in the Katherine Region. The show runs for a full week with the main Show Days being held on the third Friday of July and the following Saturday. It has always been a major event on the Katherine calendar drawing people into town from all over the region, across the territory and beyond.

Competitors in the Campdraft and Rodeo come from the Katherine region, the entire Northern Territory, areas throughout the Kimberley (including Broome and Kununurra) as well as outback Queensland.

Each year the Show grows and in 2014 there were over 17,000 people through the gates over the main two days, a number that is continually trending upwards each year.

The Katherine Show includes a three day Campdraft, 2 day Working Dog Trials and 2 nights of Rodeo. The current facility is a multi-purpose facility, requiring the set up and collapse of additional internal panels for the rodeo and Working Dog Trials.

The grounds around the arena are used for camping of all Campdraft and rodeo competitors and housing for their horses. Campers are required to set up their own fenced areas for horses that are not secure (temporary fencing) and expand past the race track.

During the last few years the Katherine Showgrounds has been at full capacity during the annual Katherine Show and Rodeo. Expansion and relocation of the facilities within the Showgrounds area is urgently required in order for the Show to continue growing.

CURRENT FACILITY LAYOUT DURING THE KATHERINE SHOW

See Map 1.1 Attached

PROPOSAL

Relocate and upgrade of Campdraft and Rodeo facility to south end of Katherine Showgrounds to the currently undeveloped land parcel.

Extended camping facilities and develop livestock yards

Include a dedicated Rodeo arena and separate Campdraft facility to cater for both events and minimise labour/WH&S risks.

See Map 1.2 for stage 1 ground development (attached)

JUSTIFICATION FOR PROPOSAL

1. Workplace Health & Safety concerns regarding the movement of animals between main arena/equestrian camping areas to participate in Campdraft and vice versa.
The movement of animals between these areas raises concerns for public safety as well as the safety of the animals and riders.
2. The current Rodeo Arena is not a dedicated facility. It requires significant time and labour for setting up and has associated risks with the required movement of heavy panels and also risks with having a facility that is not designed specifically for the purpose that it is being used.
3. Roadtrains delivering cattle are required to move through the camping area, pedestrian areas and the existing car park in order to turn around. This situation would be eliminated and reduce WH&S concerns
4. Relocation of events involving livestock to the same end of the grounds. All livestock will be at the South end.
5. Relocating campers with livestock to the South end, away from the Showmen's Guild area.
6. Establishment of more appropriate camping facilities for commonly used vehicles (Big Rigs and horse floats)
7. Reduction of vehicle movement in areas with high pedestrian use.
8. Increased safety for spectators at the Rodeo.
9. Increased spectator area which will lead to a reduction in spectator vehicles, people climbing on rails, etc.
10. Stabling of animals in current area is not secure and cannot cater for stallions. Currently campers build their own temporary yards which impacts on space for camping and allows for potential loose stock. The new facility would provide appropriate stabling and yarding of animals, including a sprinkler system to keep the cattle cool.
11. Greater control over livestock, reduction in risk of having loose animals, particularly cattle. Cattle would be limited to the fenced area should they escape from the arena. Thus eliminating any risk of these animals getting into the general Showground area, onto the golf course or into the general public domain.
12. Simplification of procedures involved and the ability to hold more events at the venue at the same time. E.g. football matches and rodeo events could be held at identical times with virtually no impact.
13. Misplaced, damaged and incomplete sections of the arenas would be greatly reduced if the need for modifications was greatly reduced or eliminated.
14. Urgent need for expansion is required. Some site exhibitors have been turned away due to lack of space during the Show.
15. Allow expansion of exhibitor sites at the North end and redevelopment of north end.
16. Beautification of the approach to town along the Victoria Highway (the main route from Western Australia).

PHASED PLAN FOR RELOCATION AND DEVELOPMENT

Preliminary Stage

- Present to Council (via Showgrounds User Group meeting) for approval to progress with development

Phase 1 – Development (Map 1.2- Draft plan)

Years 1 -3

Ground Development

- Tree removal
- Ground development (sand mix)
- Road development (unsealed road access for road trains)
- Allocate members parking area and gravel
- Tree Planting in designated areas

Finalise architect plans for long term development

(inc. Interim facility and final separate Campdraft and Rodeo facilities, location of horse/cattle stalls, camping facilities and lighting)

Years 3-4

Mound construction

Connection of Power and Water

Sewerage

Build Ablutions facilities for camping

Year 5

Move current arena and fence off parking area

Develop announcers and officials box

Erect lighting for arena

Phase 2 – Extension of Facilities

Year 6-7

Horse and Cattle Stalls

Years 8-10

Separate arenas

- Dedicated Rodeo and Working Dog Trial Arena
- Campdraft Arena & Cut-out yard

Notes on stages of the project

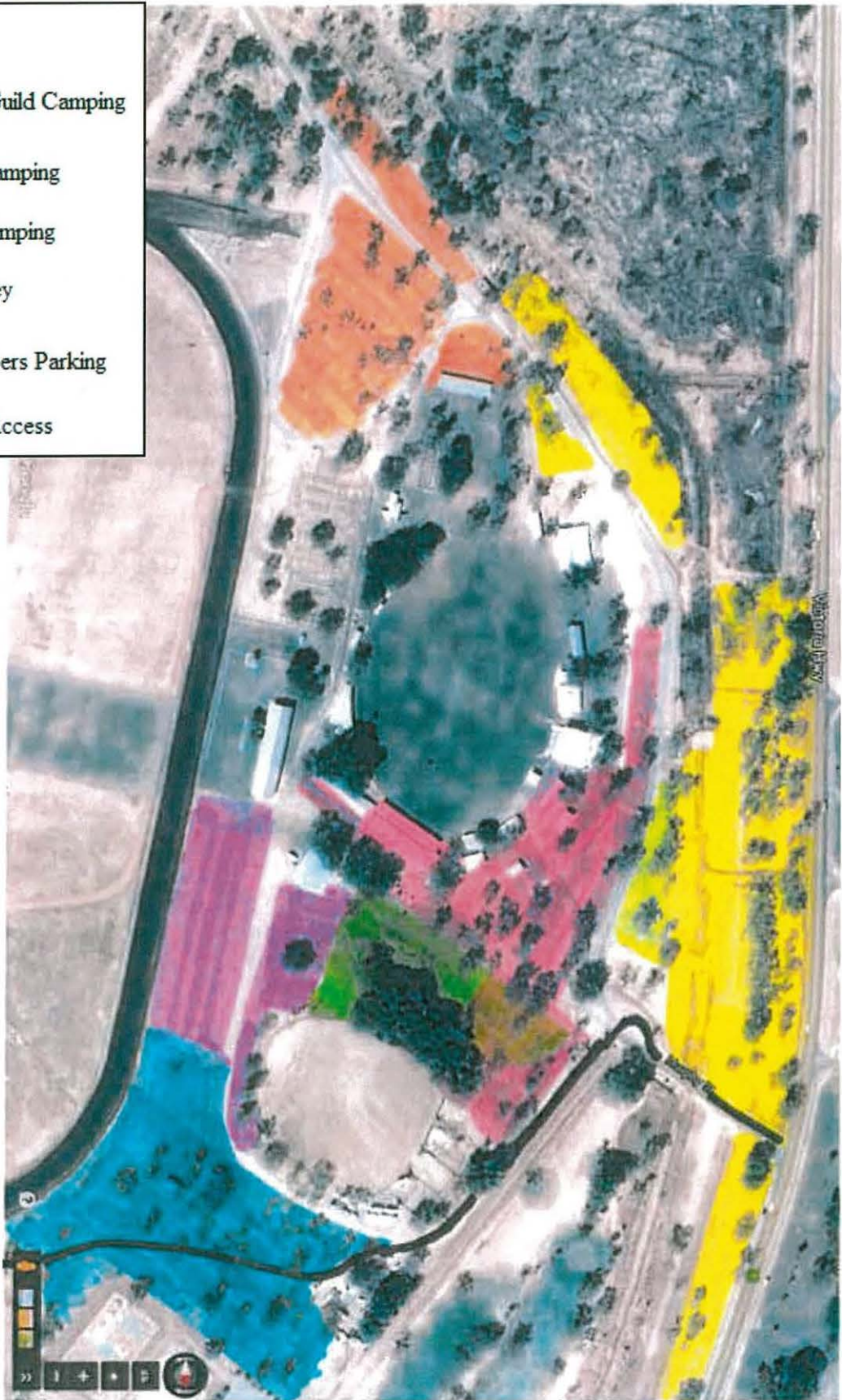
- Ground Development does not require major financial investment and has the support of several local and NT based businesses to execute the work.
- Work on the project can be carried out year round as it is within an unused fenced off area.
- Has been planned in long term to allow for the progressive development of the grounds.

Further Development

1. Cover for the Campdraft arena. This will make the arena more suitable for all equestrian events, including dressage and will attract more widespread competition. Would allow for year round use of the facility. It would also be suitable for a community market, farm machinery field days or as an entertainment venue.
2. Expansion of the other livestock facilities at the South end of the Showgrounds to provide for:
 - Additional Poultry and birds
 - Potential increase in Cattle showing
 - Goats, pigs, etc
 - A dedicated animal nursery
3. Further development of the area previously used for the Campdraft, to provide for
 - Dog show
 - Entertainment arena
 - Members Car park
 - Rationalisation of camping and the layout of the Showmen's Guild (Show rides & sideshows)
 - Open to negotiation with other Users

MAP 1.1
CURRENT USE OF SHOWGROUNDS BY KDSS

- Exhibitors
- Showmen's Guild Camping
- Equestrian Camping
- Campdraft Camping
- Sideshow Alley
- Public/Members Parking
- Road Train Access



MAP 1.2
PROPOSED RELOCATION & PHASE 1 DEVELOPMENT

